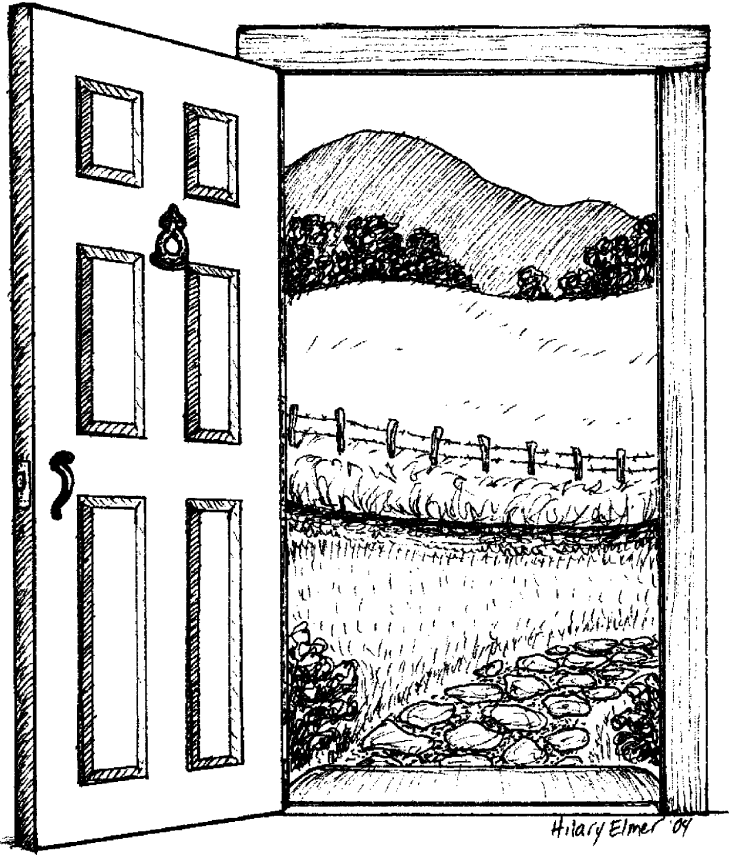


NEW ENGLAND
ENVIRONMENTAL EDUCATION
ALLIANCE 38th Annual Conference



co-hosted by
Vermont
SWEEP
(State-Wide
Environmental
Education
Programs)
& Middlebury
College

Opening Doors:

Collaboration strengthens our voices
to build sustainable communities

October 15 - 17, 2004

Breadloaf Campus, Middlebury College
Ripton, Vermont

CALL for PRESENTATIONS

Submission Deadline: **MARCH 1, 2004**

DEADLINE EXTENDED TO MARCH 31, 2004!

Dear Colleague,

Please join us at Middlebury College's beautiful Breadloaf Campus in the mountains of Ripton, Vermont October 15-17, 2004 for the **38TH ANNUAL CONFERENCE OF THE NEW ENGLAND ENVIRONMENTAL EDUCATION ALLIANCE (NEEEA)**. NEEEA serves as an umbrella organization for the six New England State Environmental Education Associations. This event connects environmental educators from across the region to network and grow professionally.

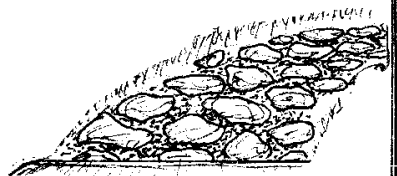
In the six years since the last Vermont NEEEA conference, we have been inspired by vibrant collaborations of agencies and organizations, teachers and community leaders, farmers and foresters. The theme for this year's conference, "Opening Doors: Collaboration strengthens our voice to build sustainable communities," reflects our hope that this gathering will bring out the stories and skills of these community stewards, in order to inspire the growth and replication of their efforts. We hope that by reaching out to a more diverse group of community members, we can encourage greater collaboration and awareness beyond Vermont's borders, in order to collectively work towards many of the goals we share.

If you are interested in conducting a workshop at this event, please review the workshop guidelines and submit a proposal by **MARCH 1, 2004**. Please pass this request on to a friend or colleague if you know of a unique program or presenter that would benefit this conference. If you have any questions regarding possible workshop ideas or how you can get involved, please contact Linda Wellings at (802) 985-8686 x50 or llwellings@shelburnefarms.org. This Call for Presentations is also posted on the Vermont SWEEP website at www.vermontsweep.org.

We hope to see you in Ripton!

Sincerely,

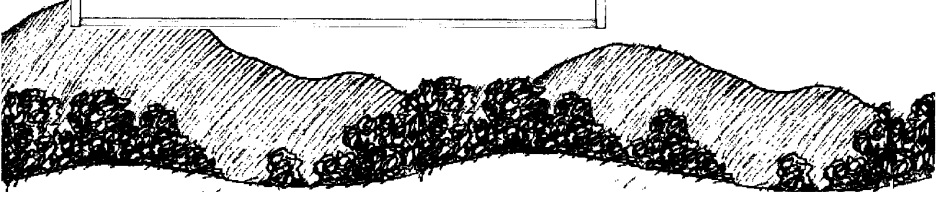
NEEEA 2004
Conference Program Committee



How can and do we draw upon the vitality and strength of diverse perspectives to build collaboration within our work?

How can we foster awareness of the connectedness of ecological, economic, political and social systems?

How can we better promote an integrated approach to thinking about the long-term health of communities, given our diverse voices?



38th Annual NEEEA Conference

Presenters

We are seeking a diverse group of presenters whose programs, methodologies, philosophies and experiences will inspire, provide skills, and challenge participants to make changes in their own communities. Whether you're a classroom teacher, logger, farmer, politician, or town planner we invite you to share your experiences as a community steward with us.

Conference Theme

Opening Doors: Collaboration strengthens our voice to build sustainable communities.

Conference Vision

We look to the future of our work and our world from many different perspectives and expertise. We share the goal of creating more sustainable communities, both locally and globally, where we can ensure the health and livelihood of our land's resources and inhabitants for future generations.

Strong communities are important to New England's culture. Our tradition of participatory democracy encourages us to listen to each voice respectfully. This goes beyond tolerance to recognize that diversity is our strength and that a range of ideas and partnerships lay the best foundations for meaningful collaboration.

Workshop Guidelines

Workshops should align with one or more of the following topics.

TOPIC

Sustainability - Civic engagement and/or understanding of interconnectedness of environment, social equity, and economy.

Systems - A collection of interrelated parts that interact to form a whole.

Advocacy - Exploring the politics and legal issues concerning the community and the environment.

Partnerships/Collaboration/Community - Bringing together multiple stakeholders and diverse perspectives.

Understanding Place - Programs that explore local, natural and cultural history.

EXAMPLE

The public actively engaged in community decisionmaking.

Farmers and educators explore food systems by making farm-to-table connections.

Students active as community leaders to influence their community.

Schools and community groups work on service learning projects.

Schools or community map local forests or participate in town planning.

2004 VERMONT NEEEA CONFERENCE

Workshop Proposal Form

Also available online at: www.vermontsweep.org. Deadline: **MARCH 1, 2004**

Name: _____

Title: _____

Organization: _____

Mailing Address: _____

Phone: (W): _____ (H): _____

E-mail: _____

Workshop Title: _____

Workshop Summary (50 word max, as it will appear in the conference brochure):

Workshop Description

What is your background in this area?

How do you plan to tie the conference theme into your workshop/discussion?

How will you involve participants/in what ways will your workshop be interactive?

What will participants gain from your presentation?

At the end of your workshop, how do you plan to reflect with participants upon the information presented?

Workshop Topics *(Please check all that apply.)*
See "Workshop Guidelines" inside for explanation of topics.

- Sustainability
- Systems
- Advocacy
- Partnerships/Collaboration/Community
- Understanding Place

Workshop Type:
(Please choose one)

- Theory
- Case study
- Skill-builder

Workshop Level:

- Novice
- Intermediate
- Advanced

Format Preference:
(indicate 1st & 2nd choice)

- 1 ¾ hrs
- 2 hrs
- 3 ½ hrs

Availability:

- Sat. morning
- Sat. afternoon
- Sun. morning

Requirements:

- Indoor Space
- Outdoor Space
- Other _____

Group size: Minimum _____ Maximum _____

Have you presented before at a NEEEA Conference? If so, what year(s)?

Please list two references for workshop/programs that you have presented:

Name: _____ Phone: _____

Name: _____ Phone: _____

Compensation: *In an effort to keep the conference affordable, Vermont SWEEP asks presenters to donate their time. Please select one of the following options.*

- \$30 registration discount
- I want to support NEEEA by paying the full registration fee
- I do not plan to register but would like a complimentary meal
- I do not plan to register and am unable to stay for a meal

Please submit proposals by **MARCH 1, 2004** to: Linda Wellings
Shelburne Farms ~ 1611 Harbor Road ~ Shelburne, VT 05482 ~ 802-985-8686
Fax: 802-985-8123 ~ E-mail: llwellings@shelburnefarms.org